



First Mid

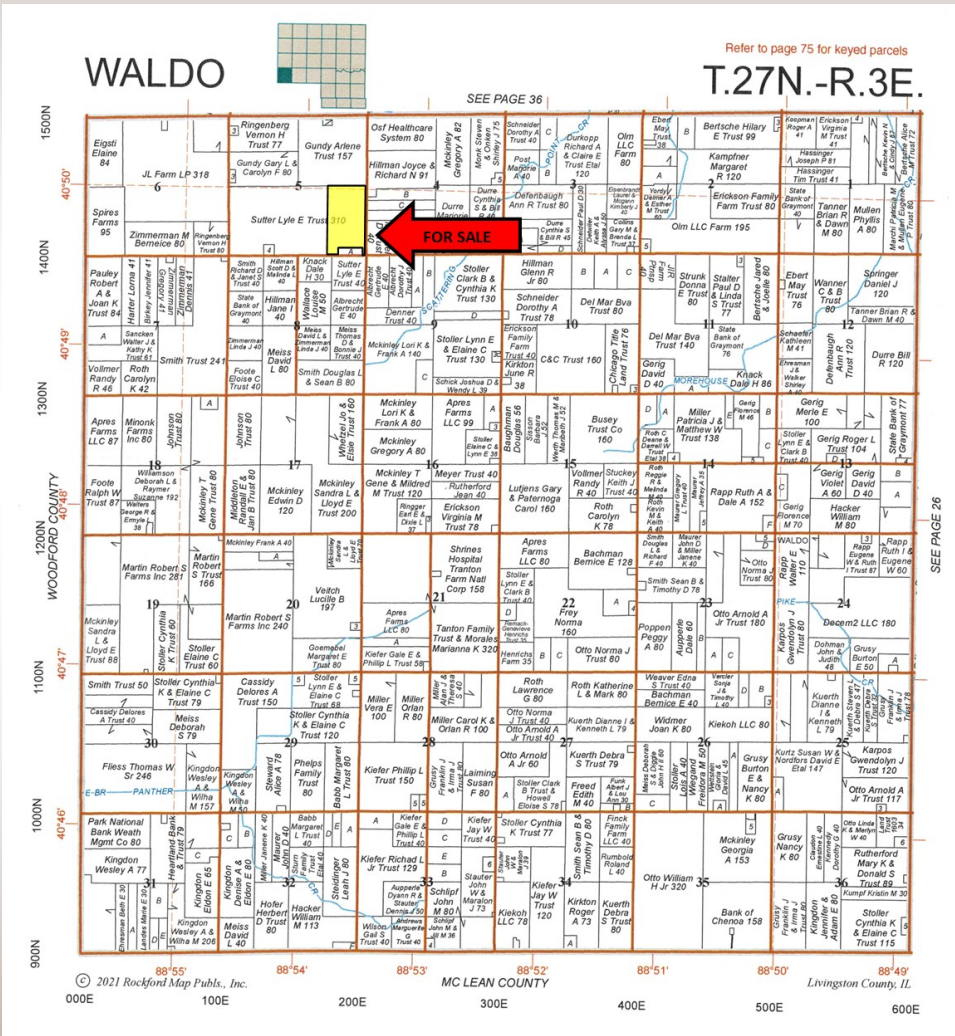
AG SERVICES

Livingston County
Farmland
For Sale!

87.86 +/- Acres

The Sutter Farm

This farm is located 7 miles North of Gridley, IL and 4 miles Southwest of Flanagan, IL



- High % Tillable
- Near excellent grain markets
- Soil PI of 129.3
- Selling Surveyed Acres
- Outstanding Fertility

For More Information Contact:

Daniel S. Patten, Managing Broker
(309) 530-1575
E-mail: dpatten@firstmid.com

David Klein, ALC,
Designated Managing Broker
(800) 532-5263 or
(309) 665-0961
E-mail: dklein@firstmid.com

First Mid Ag Services
6 Heartland Drive, Suite A
Bloomington, IL 61704

Reprinted with permission from Rockford Map Co. Inc.

Latitude: 40.829999 Longitude: -88.893931

The information provided is believed to be accurate and representative. However, it is subject to verification and no liability for error or omissions is assumed. The property is being sold in "as is" condition. There are no warranties, expressed or implied, as to the information contained herein and it is recommended that all interested parties make an independent inspection of the property at their own risk, with the assistance of the Listing Broker. First Mid Ag Services, a division of First Mid Wealth Management Co. is the Listing Broker, Daniel S. Patten, Managing Real Estate Broker, is the designated agent and represents the Seller in this transaction. First Mid, the Seller and designated agent expressly disclaim any liability for errors, omissions or changes regarding any information provided. Potential Buyers are urged to rely solely upon their own inspections and opinions in preparing to purchase this property and are expressly advised to not rely on any representations made by the Seller or their agents. Any lines drawn on photos are estimates and not actual. Stock photo may be in use.



First Mid

AG SERVICES

87.86 +/- Acres
Livingston County, IL

Aerial Photo



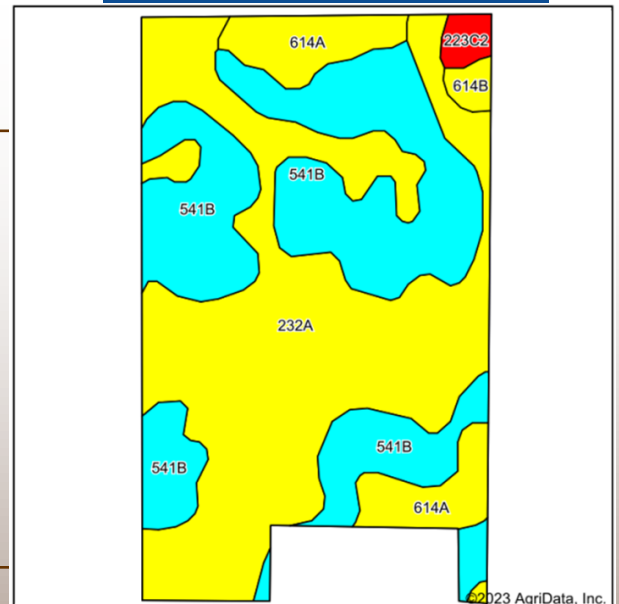
Aerial & Soils data provided by AgriData, Inc.
Lines drawn are estimates.

Yields

Year	Corn (bu/acre)	Soybeans (bu/acre)
2018	184	62
2019	<i>198</i>	59
2020	186	65
2021	<i>214</i>	65
2022	230	<i>69.5</i>
Average:	202.4	64.1

(Yields are for entire tax parcel - the crop that was a majority of the 87.86 acres are in italics)

Soil Map



Soil Tests:

Average of
Samples pulled in Oct. 2022
*excluding approximately west 8
acres of farm

pH	P (lbs/acre)	K (lbs/acre)
6.5	94	516

Primary Soil Types:

- 232A - Ashkum silty clay loam
- 541B - Graymont silt loam
- 614A - Chenoa silty clay loam
- 223C2 - Varna silt loam
- 614B - Chenoa silty clay loam

Weighted Soil PI:
129.3

General Terms:

Farm Listing Price: 87.86 acres +/- @ \$15,500/acre or \$1,361,830.00. The Buyer will enter into a contract with 10% down payment with the balance due within 30 days of contract signing. A title policy in the amount of the sale price will be furnished to the Buyer. The agricultural lease is cash rented for 2023 to Gary Gundy. The Seller will retain the first installment of 2023 cash rent. The second installment shall be negotiable depending on closing date. The Seller will give a credit at closing for any unpaid 2022 real estate taxes. The 2023 estimated real estate taxes will be split proportional to the amount of 2023 rent received with the Seller providing a credit for the 2023 real estate taxes proportional to the percentage of rent received by the Seller. All mineral rights owned by the Seller will be conveyed to the Buyer. For more information, request a full brochure at www.firstmidag.com.

